



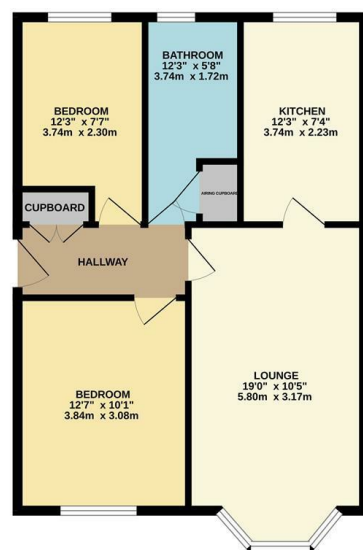
**jordan fishwick**

45 TIVERTON DRIVE WILMSLOW SK9 2TJ  
Guide Price £199,950

## 45 TIVERTON DRIVE WILMSLOW SK9 2TJ

Located on Tiverton Drive this two double bedroom ground floor apartment is located a short drive away from Wilmslow centre. Wilmslow offers a wide range of shopping facilities, bars, restaurants, leisure centre and Wilmslow station which allows easy direct access to London Euston and Manchester City centre. The accommodation comprises a communal hallway and staircase leading to all floors and a private hallway with useful storage cupboard. The apartment is UPVC double glazed throughout and there is a generously proportioned living/dining room which is complemented by a bay window to the front aspect. Additionally, there is a recently fitted and modern bathroom. The kitchen has also been recently re fitted with a tasteful and stylish modern range of matching wall and base units. There are communal gardens and residents parking. Locally there are a wide choice of schools, alongside beautiful countryside. The property is well presented throughout with viewings essential to appreciate

GROUND FLOOR



Measurements are approximate. See us call. Specialist purposes only. Made with Design CAD.

- Popular Location
- Ground Floor
- Off Road Parking
- Easy reach of local shops and airport
- Two Double Bedrooms
- Excellent Condition
- Viewing Recommended

